

## MESys Fill Kit Instruction Manuel

10/20/2008 Version I

### List of materials:

- Spiral clamp (4)
- 5" band clamp (2)
- 8.5" band clamp (1)
- Male quick connect coupling (2)
- Coupling cap (2)
- Face plate (2)

### Materials not included:

- Silicone spray
- Silicone caulking
- Fill hose (Purchased separately due to need for varying lengths)
- Screws for face plate

### Tools not included:

- Rubber mallet
- Heat gun
- Flat head screw driver or 8mm drive socket
- 5" hole saw
- Chisel
- Electric drill
- Adjustable wrench
- Caulking gun

### Steps

- Plan, measure & mark
- Cut hole in wall
- Assemble outside hose end
- Insert hose
- Secure hose/coupling
- Secure hose to storage container
- Install filter

## Notes

- A generous application of silicone spray will make insertion of coupling into hose much easier
- Follow manufacturer's instructions for silicone spray
- Do not use a lubricant that will break down the rubber such as WD 40
- Always use appropriate safety gear such as safety glasses and gloves
- Couplings must be accessible from outside and no more than 60 ft from a plowed and available parking spot for the delivery truck

## Instructions:

### 1. Plan, measure & mark

- Take some time to consider the location of the couplings
  - Make sure you choose a spot that is accessible to the driver of the delivery truck
  - Locate the couplings at the closest point to the driveway
  - Maximum recommended distance from driveway is 50ft
  - The couplings should be located above ground level but not higher than chest level
  - Make sure the location is accessible from inside so that you will be able to complete the installation
- Measure from a common landmark like a chimney
  - An 18" long drill bit may be useful as a pilot but be careful not to make unnecessary holes or to over-drill and damage inside wiring or walls
- Mark and recheck the planned location of the couplings

### 2. Cut hole in wall

- Using whatever tools are most appropriate for the material
- A 5" hole saw is useful for wooden walls

- It will be necessary to cut a notch in the wall to accept the screw section of the band clamp holding the hose to the coupling

### 3. Assemble outside hose end (See photo 2)

- Insert coupling through hole in faceplate
- Spray a generous amount of spray silicone on the coupling and into the hose end
- Insert coupling into hose end
  - Pressing against the ground and or use of a rubber mallet will aid insertion
  - In some cases it will be necessary to use a heat gun to expand hose before coupling insertion
- Use 5" band clamp to secure hose to coupling

### 4. Insert hose

- Push the end of the hose through the hole in the wall
  - It may be useful to tie a rope to the hose end to pull through hard to reach spots

### 5. Secure hose/coupling

- Use screws to secure face plate to wall (See photo 3)
- Use spiral clamps to secure hose to inside of wall (see photo 4)
  - Pull hose to create tension
  - Spin clamp into place
  - Tighten clamp

## 6. Secure hose to storage container

- For galvanized steel bins (see photo 5)
  - Spin spiral clamp into place
  - Spray fill and return nozzles and inside of hose with silicone spray
  - Push hose into place, making sure that the entire nozzle is in the hose
  - Tighten spiral clamps securely
- For indoor bag storage unit (See photo 6)
  - Put sleeves on top of the “bag” through spiral clamps
  - Insert hose into sleeve
    - Using some spray silicone may be necessary
  - Tighten spiral clamps
  - Use one of the bag ties to secure the fill hose to frame
  - Make sure the fill hose goes into the sleeve in the middle of the bag and that the hose is situated such that it will spray parallel to the floor

## 7. Install filter (See photo 7)

- Place filter over vent nozzle
- Secure with 8.5” band clamp

Photos:



(Photo 1: MESYS fill kit components)



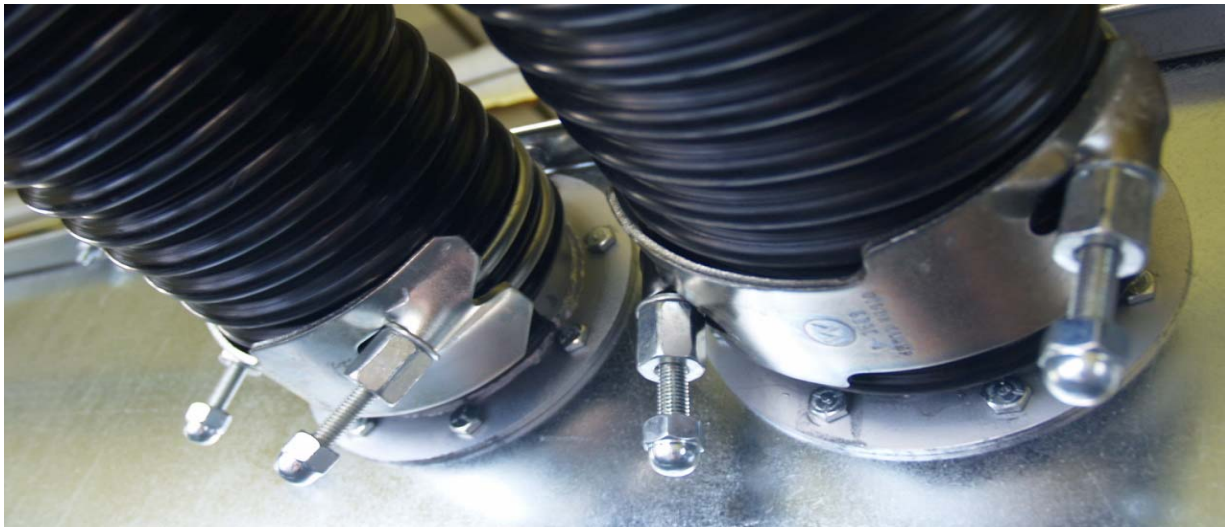
(Photo 2: Assembled outside end of hose)



(Photo 3: Installed couplings)



(Photo 4: Spiral clamps used to hold hoses in place)



(Photo 5: Hoses attached to storage bin)



(Photo 6: Hoses attached to storage bag)



(Photo 7: Installed Filter bag)